



## VITROVEX® self-sealing vacuum ports



VITROVEX® self-sealing vacuum ports and pressure caps in combination with the VITROVEX® Deck Purge Box (P/N DPB M120) provide an innovative new concept for VITROVEX® deep sea glass housings.

VITROVEX® self-sealing vacuum ports require a custom purge fitting to be interfaced to any vacuum purging system. That purge fitting is part of the VITROVEX® Deck Purge Box (DPB), which serves a valuable function by dynamically removing moisture from the entrained air inside an instrument housing.



Together with the DPB, VITROVEX® self-sealing vacuum ports provide immediate improvement over traditional vacuum ports.



### ■ Advantages

#### Self-sealing center check valve

A self-sealing center check valve closes when the DPB purge fitting is removed, allowing the operator to carefully clean and install the o-ring in the pressure cap with care and confidence. The center check valve keeps the dry interior air created by the Deck Purge Box isolated from the ambient moist marine air of the ship. The interior check



valve prevents the interior vacuum from drawing any air-laden debris across the greased o-ring seal surface, eliminating a potential source of failure.

#### Separate pressure cap

The pressure cap o-ring is a large cross-section for better sealing, and easily removed for cleaning and inspection. Large threads on the pressure cap resist cross-threading and over-torquing, a real advantage in rough seas and long days.

#### Made of Titanium and pressure tested

All purge port elements exposed to seawater and ocean pressure are made of Titanium 6 Al-4 V.

Every VITROVEX® self-sealing vacuum port is individually tested to 18.000psi, and is permanently laser marked with an individual serial number.

#### Easy to disassemble for maintenance

Flats on the body make every VITROVEX® self-sealing vacuum port easy to disassemble for maintenance and inspection.

#### Backward compatibility

A retrofit design allows backward compatibility with earlier VITROVEX® and other glass housings fitted with the prior vacuum ports.

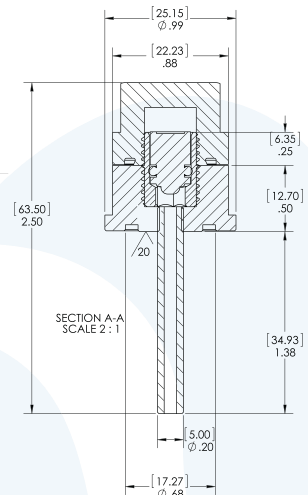
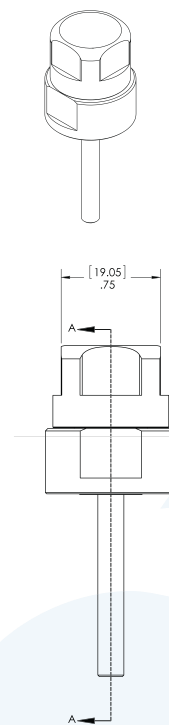
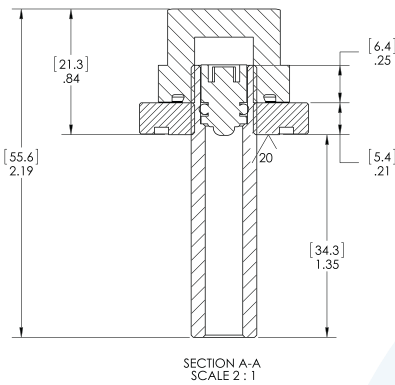
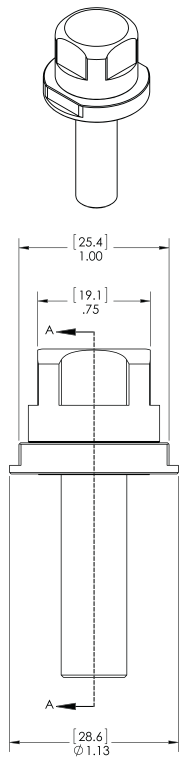




■ Models and dimensions

- P/N NMS-IS-CON10 (7/16" shaft)

- P/N NMS-IS-CON11 (retrofit version with 5mm shaft)



For further information please contact:

